

NKX1-1 Antibody (Center)
Affinity Purified Rabbit Polyclonal Antibody (Pab)
Catalog # AP11916c

Specification

NKX1-1 Antibody (Center) - Product Information

Application	WB, IF, E
Primary Accession	Q15270
Other Accession	XP_931434.4
Reactivity	Human
Host	Rabbit
Clonality	Polyclonal
Isotype	Rabbit IgG
Calculated MW	44012
Antigen Region	1-1

NKX1-1 Antibody (Center) - Additional Information

Gene ID 54729

Other Names

NK1 transcription factor-related protein 1, Homeobox protein 153, HPX-153, Homeobox protein SAX-2, NKX-11, NKX1-1, HPX153

Target/Specificity

This NKX1-1 antibody is generated from rabbits immunized with a KLH conjugated synthetic peptide between 230-258 amino acids from the Central region of human NKX1-1.

Dilution

WB~~1:1000

IF~~1:10~50

E~~Use at an assay dependent concentration.

Format

Purified polyclonal antibody supplied in PBS with 0.09% (W/V) sodium azide. This antibody is purified through a protein A column, followed by peptide affinity purification.

Storage

Maintain refrigerated at 2-8°C for up to 2 weeks. For long term storage store at -20°C in small aliquots to prevent freeze-thaw cycles.

Precautions

NKX1-1 Antibody (Center) is for research use only and not for use in diagnostic or therapeutic procedures.

NKX1-1 Antibody (Center) - Protein Information

Name NKX1-1 ([HGNC:24975](#))

Function May be required for the coordinated crosstalk of factors involved in the maintenance of energy homeostasis, possibly by regulating the transcription of specific factors involved in energy balance.

Cellular Location

Nucleus {ECO:0000255|PROSITE-ProRule:PRU00108}.

Tissue Location

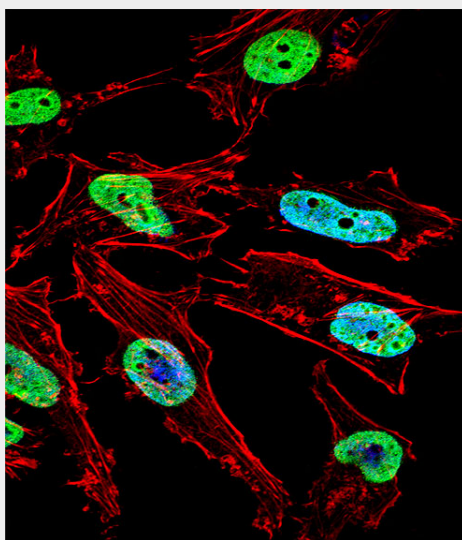
Expressed in hemopoietic progenitor cells.

NKX1-1 Antibody (Center) - Protocols

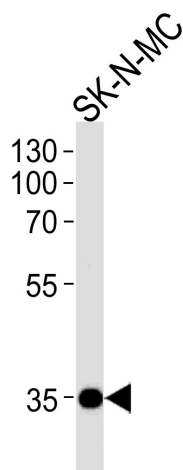
Provided below are standard protocols that you may find useful for product applications.

- [Western Blot](#)
- [Blocking Peptides](#)
- [Dot Blot](#)
- [Immunohistochemistry](#)
- [Immunofluorescence](#)
- [Immunoprecipitation](#)
- [Flow Cytometry](#)
- [Cell Culture](#)

NKX1-1 Antibody (Center) - Images



Fluorescent confocal image of HeLa cell stained with NKX1-1 Antibody (Center)(Cat#AP11916c). HeLa cells were fixed with 4% PFA (20 min), permeabilized with Triton X-100 (0.1%, 10 min), then incubated with NKX1-1 primary antibody (1:25, 1 h at 37°C). For secondary antibody, Alexa Fluor® 488 conjugated donkey anti-rabbit antibody (green) was used (1:400, 50 min at 37°C). Cytoplasmic actin was counterstained with Alexa Fluor® 555 (red) conjugated Phalloidin (7units/ml, 1 h at 37°C). Nuclei were counterstained with DAPI (blue) (10 µg/ml, 10 min). NKX1-1 immunoreactivity is localized to Nucleus significantly.



NKX1-1 Antibody (Center) (Cat. #AP11916c) western blot analysis in SK-N-MC cell line lysates (35ug/lane). This demonstrates the NKX1-1 antibody detected the NKX1-1 protein (arrow).

NKX1-1 Antibody (Center) - Background

The function of this protein remains unknown.